

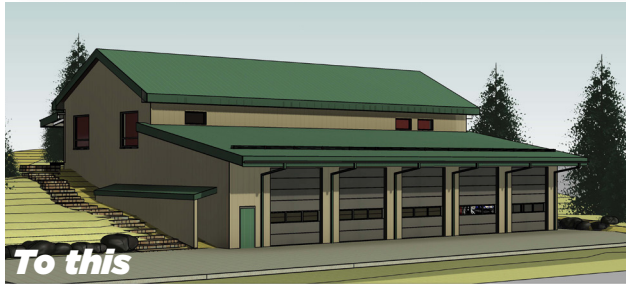


REBUILDING STATION 2 TO BETTER SERVE YOU

Boulder Mountain Fire Protection District's number one goal is to serve you, the residents, to the best of our ability. When you dial 911—whether you feel sick, are injured, smell smoke, slide your car off the road, or have another emergency—the dedicated volunteer firefighters and medics of Boulder Mountain Fire respond to help in your time of need. Today, we need your help with raising funds to rebuild Station 2.



From this



To this

Community Need

Station 2, located in Boulder Heights at 50 Overlook Lane, was built in the 1960s. Its age is hindering our ability to safely and efficiently serve the entire BMFPD community. The current station is so old and small that modern fire trucks do not fit in the bays, essential equipment can't be stored where needed, and firefighters must change into their protective gear dangerously close to engines. In March 2020, the old wiring even started a fire! Luckily, a crew happened to return from a wildland fire and extinguished the blaze before the whole station burned down.

As Station 2 has aged, community demand for emergency services has dramatically increased. Our population has grown, as has the risk of wildfires, floods, and other natural hazards. Since 2010, the number of emergency calls BMFPD responds to in a year has increased by two-thirds. Simply put, public safety demands have outstripped Station 2's capabilities.

Ways the New Station Will Improve Service

Following three years of research and planning, construction of a replacement Station 2 will begin in 2021. The new station will help us better serve our community:

- Larger and more engine bays to house modern 4WD fire trucks, including water tenders (important for areas without fire hydrants)
- Reorientation of the station so that engines can exit directly onto Deer Trail Road, helping to speed up response times
- Two offices and a training room that can be used during major incidents as a command center and hub for getting district residents current information
- A community space where residents can attend meetings
- Showers and a gear washing system for decontamination, which will help keep firefighters and their families safe from chemicals and by-products encountered during incidents



"Station 2 is essential to continuing to meet our mission, which is to provide rapid, effective, and organized responses to fire, medical, and other emergency situations."

—Chief John Benson



BMFPD Volunteer Firefighters Are Here for You. YOU Can Be There for Them!

Join Your Community to Enhance Public Safety

Station 2 and its engines and firefighters respond to every emergency call that comes in from across the district, including Boulder Heights, Carriage Hills, Lee Hill Drive, Pine Brook Hills, Reed Ranch, Rembrandt, Valley Lane, and Wagon Wheel Gap. This is why we're encouraging every family in the district to be a part of our community and contribute to the fundraising campaign. With your participation, we CAN reach our goal of \$1.25 million in contributions from our community.

Make your tax-deductible contribution today at <https://www.bmfpd.org/donations>

If you'd like to make a contribution of stocks or via a donor advised fund, contact Bob Loveman, president of the BMFPD Board of Directors, at Rloveman47@gmail.com or 303-926-0204.

Learn More at www.bmfpd.org/station-2-info

BMFPD by the Numbers

Serving 1,000+ homes across the district's 12 square miles, we:

- Responded to 167 emergency 911 calls in 2020
- Trained for over 3,600 hours in 2020
- Worked 1,300 hours over 179 shifts during the 2020 CalWood and Lefthand fires alone
- Counted 6 full-time personnel, 57 volunteers, and 11 seasonal staff as of July 2021

New Station 2 Top Features

- Energy-efficient design elements, including solar power and radiant floor heating
- Metal building designed for fire resistance, low maintenance, and longevity
- Heated concrete apron to avoid use of chemicals to melt ice
- Six engine bays with 14-foot doors to fit modern 4WD trucks
- Space for community meetings
- Large training and incident command spaces
- Office spaces for leadership presence
- Showers and a gear wash system for decontamination
- ADA compliant



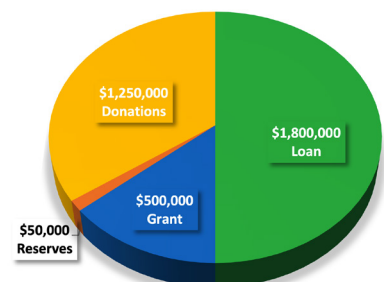
Heather Leja (right) with volunteer Tess Adams, now in medical school, and BMFPD board member Scott Schiff

"Five years ago, I awoke at 3 am to find my husband gravely ill on the floor. When I called 911, ice and snow delayed the ambulance. But BMFPD responders arrived first to help stabilize him and get him to the hospital, where he eventually recovered. BMFPD's prompt and skillful response motivated me to join the department as a firefighter/EMT. The new Station 2 will further support our ability to serve all district residents in their time of need."

—Heather Leja, Firefighter, EMT

The new Station 2 will be funded through four sources:

- \$1.8M low-interest loan
- \$1.25M capital campaign
- \$500,000 grant from the Colorado Department of Local Affairs
- \$50,000 in capital reserves



Donate today at <https://www.bmfpd.org/donations>